

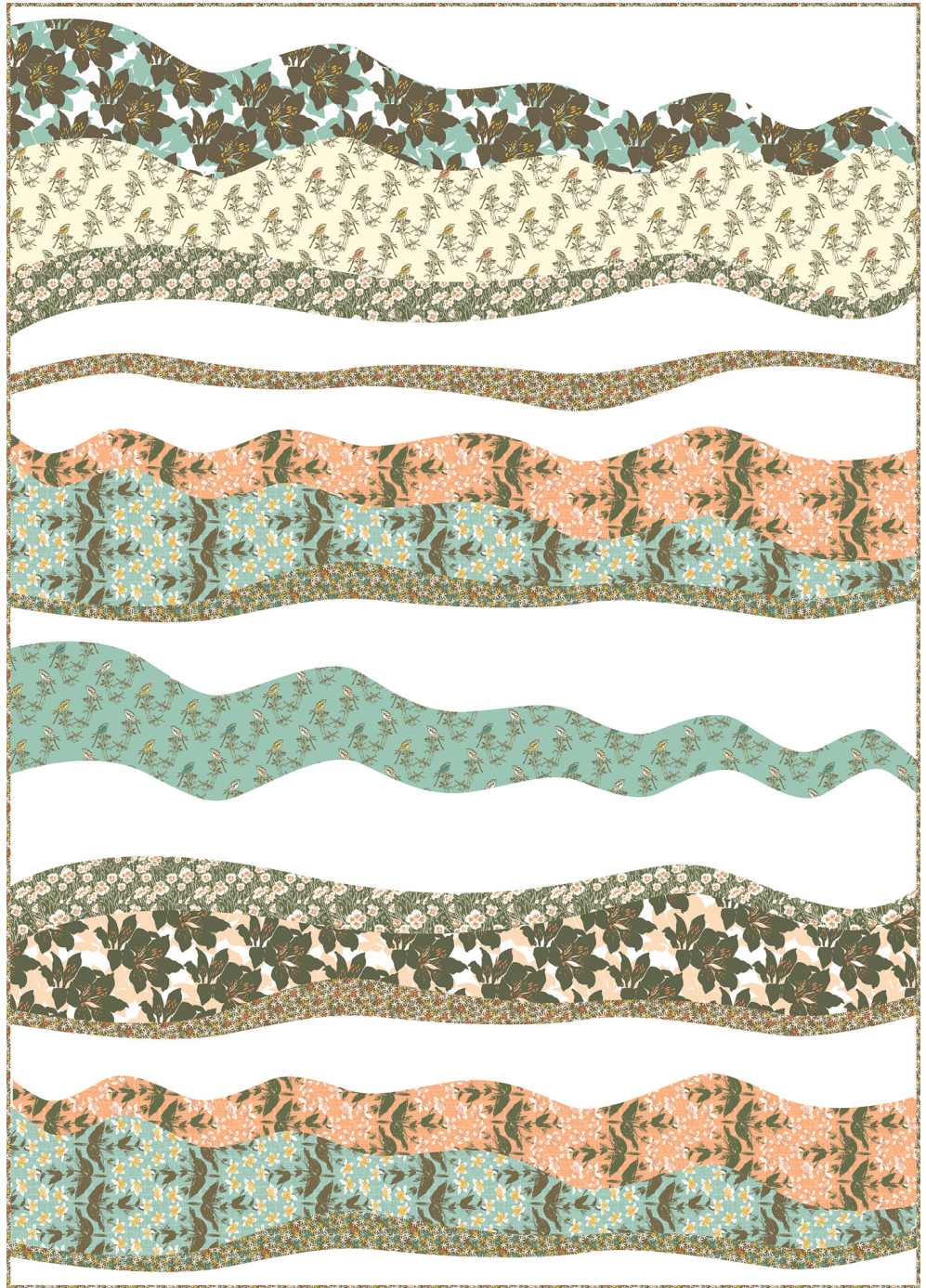
# Sierra Sketchbook

BY LORI MASON



Strata  
Quilt Design:  
**Heidi Pridemore**

Quilt Size: **61" x 86"**  
[andoverfabrics.com](http://andoverfabrics.com)



andover

makower uk  
*The Henley Studio*

Free Pattern Download Available

1384 Broadway New York, NY 10018  
Tel. (800) 223-5678 • [andoverfabrics.com](http://andoverfabrics.com)

Quilt finished 61" x 86"

*I used the elements of nature as the inspiration for this lovely quilt. The elegant prints ripple across the quilt top in this design. Perfect for advanced beginners.*

## Cutting Directions

**Note: Read assembly directions before cutting patches.** Borders are cut to exact length required plus ¼" seam allowance. WOF designates the width of fabric from selvedge to selvedge (approximately 42" wide).

**Fabric A** Cut (2) 13" x WOF strips. Sew the strips together, end to end with diagonal seams, and cut (1) 13" x 62" strip.

**Fabric B** Cut (1) 13" x 62" strip from the length of fabric (LOF).

**Fabric C** Cut (4) 7" x WOF strips. Sew the strips together, end to end with diagonal seams, and cut (2) 7" x 62" strip.

**Fabric D** Cut (2) 4" x WOF strips. Sew the strips together, end to end with diagonal seams, and cut (1) 4" x 62" strip.  
Cut eight 2 ½" x WOF strips for the binding.

**Fabric E** Cut (4) 12" x WOF strips. Sew the strips together, end to end with diagonal seams, and cut (2) 12" x 62" strips.

**Fabric F** Cut (4) 13" x WOF strips. Sew the strips together, end to end with diagonal seams, and cut (2) 13" x 62" strips.

## Fabric Requirements

Quilt		Yardage	Fabric
<b>Fabric A</b>	stripe	7/8 yard	7959-T
<b>Fabric B</b>	stripe	1 3/4 yards	7961-OL
<b>Fabric C</b>	stripe	7/8 yard	7963-OV
<b>Fabric D</b>	stripe, binding	7/8 yard	7962-ON
<b>Fabric E</b>	stripe	1 1/2 yards	7960-O
<b>Fabric F</b>	stripe	1 1/2 yards	7960-T
<b>Fabric G</b>	stripe	1 1/4 yards	7962-TN
<b>Fabric H</b>	stripe	7/8 yard	7961-T
<b>Fabric I</b>	stripe	7/8 yard	7959-O
<b>Fabric J</b>	background	5 yards	A-T-White Lies
<b>Backing</b>		5 1/4 yards	7959-O

**Fabric G** Cut (6) 6" x WOF strips. Sew the strips together, end to end with diagonal seams, and cut (3) 6" x 62" strips.

**Fabric H** Cut (2) 13" x WOF strips. Sew the strips together, end to end with diagonal seams, and cut (1) 13" x 62" strip.

**Fabric I** Cut (2) 13" x WOF strips. Sew the strips together, end to end with diagonal seams, and cut (1) 13" x 62" strip.

**Fabric J** Cut (2) 88" x WOF strips. Sew the strips together and trim to 61 ½" x 86 ½" piece for the background.

**Backing** Cut (2) 94" x WOF strips. Sew the strips together and trim to make (1) 69" x 94" backing.

**You will also need:**  
Fusible Web

# Strata

## Making the Quilt

### Quilt Top Assembly:

(Refer to the *Quilt Layout* when assembling the quilt top or runner top.)

1. Add fusible web to the back of each strip (pieced and not pieced) (Diagram 1).
2. Refer to the quilt photo as a guide, working from the top of the quilt, draw a curvy shape on the front of the fusible-backed strip (Diagram 1).

Add Fusible Web to back of each pieced strip

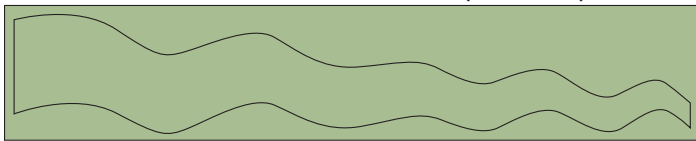


Diagram 1 Draw a curvy shape on the front of the fusible backed strip.

3. Cut out the curvy shape on the drawn lines (Diagram 2).

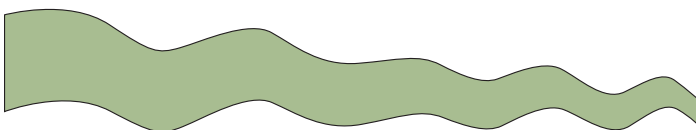
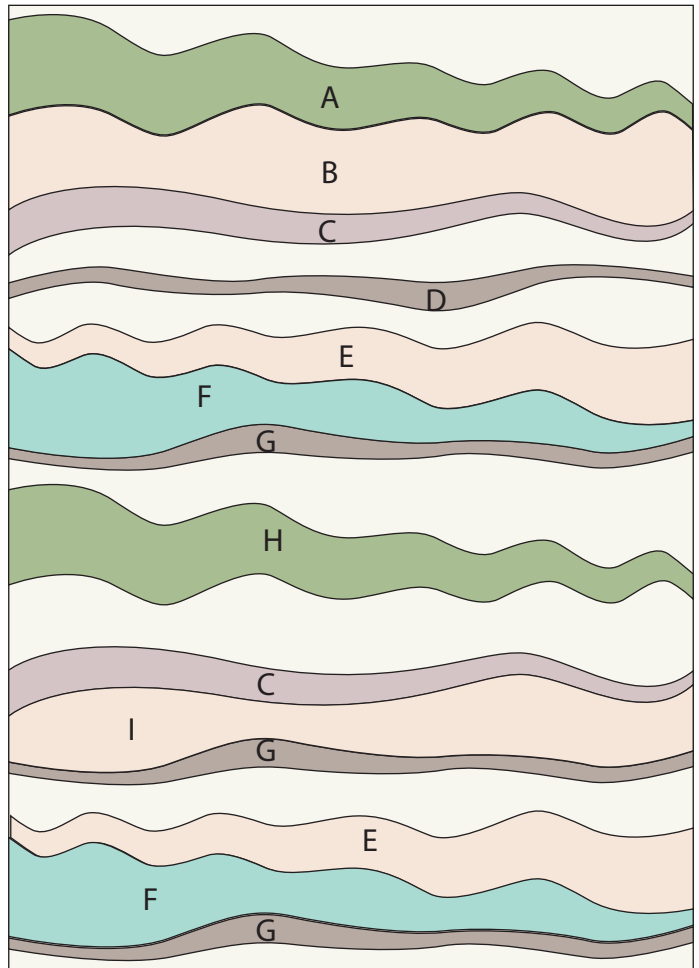


Diagram 2 Cut out the stripe

4. Where the strips overlap, place the top cut strip (example: Fabric A) on top of the next stripe (example: Fabric B). Trace the bottom edge of Fabric A onto the top edge of Fabric B. Sew along the traced line. Repeat for the remaining strips.
5. Press the stripes to the 61 1/2" x 86 1/2" Fabric J piece in order, working from the bottom of the quilt to the top. When fused stripes meet, make sure to slightly overlap the fused stripes so the white background does not show through in between the strips.
6. Stitch around the raw edges on each stripe with a decorative stitch, such as a button hole or satin stitch.

## Finishing the Quilt

7. Layer and quilt as desired.
8. Sew the (8) 2 1/2" x WOF Fabric D strips together, end to end with a 45-degree seams, to make the binding. Fold this long strip in half lengthwise with wrong sides together and press.
9. Bind as desired.



Quilt Layout

# Sierra Sketchbook

BY LORI MASON



7964-OC\*



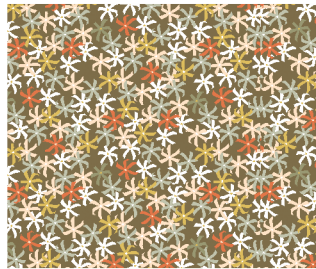
7964-TY\*



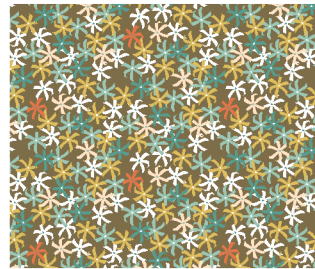
7963-OV\* 7/8 yd



7963-TN\*



7962-ON\* 7/8 yd  
(includes binding)



7962-TN\* 1 1/4 yds



7961-OL\* 1 3/4 yds



7961-T\* 7/8 yd



7960-O\*\* 1 1/2 yds



7960-T\*\* 1 1/2 yds

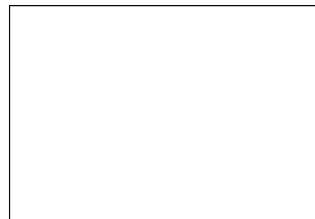


7959-O\*\* 6 1/4 yds  
(includes backing)



7959-T\*\* 7/8 yd

*Blend with fabrics from  
Textured Solids by Andover Fabrics*



A-T-White Lies\* 5 yds

## About Our Fabrics

A recognized leader in the quilting industry, Andover Fabrics features designs by a wide variety of talented fabric artists. Catering to the tastes of creative and dedicated quilters, Andover has a style for every look — authentic reproductions, romantic florals, exotic Orientals, ethnic influence, whimsical, funky, playful or basic. Collections are supported with "free-to-use" patterns on their website.

\*Fabrics shown are 25% of actual size.

\*\*Fabrics shown are 12.5% of actual size.

andover



makower uk  
*The Henley Studio*

Free Pattern Download Available

1384 Broadway New York, NY 10018  
Tel. (800) 223-5678 • andoverfabrics.com